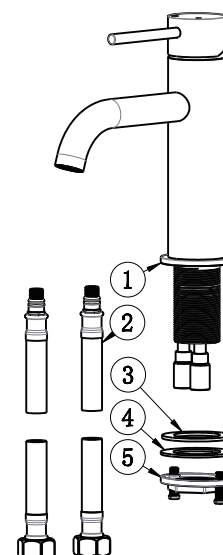
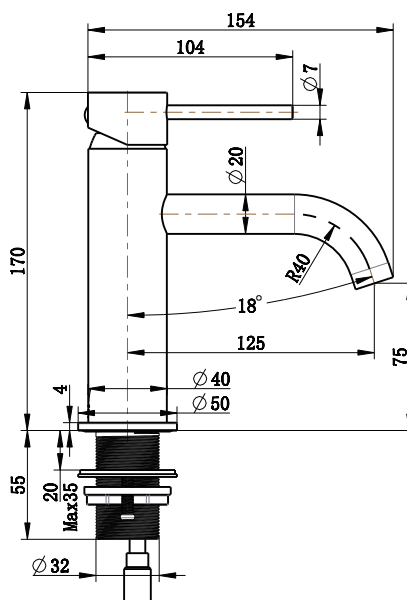


Installation Manual



NO.Ddescription

1. Main body
2. Inlet hose
3. Washer
4. Gasket
5. Locking nut

QTY

- X1
X1
X1
X1
X1

General information

1. Prior to installing a tap, all pipes leading to the product must be flushed clean.
2. Products are manufactured as per standard AS/NZS 3718:2021 and with WaterMark & WELS certificate as shown in the packing.
3. All surfaces should be cleaned with water or mild liquid detergent. Do not use cream cleaner or citrus based or chemical cleaning products.

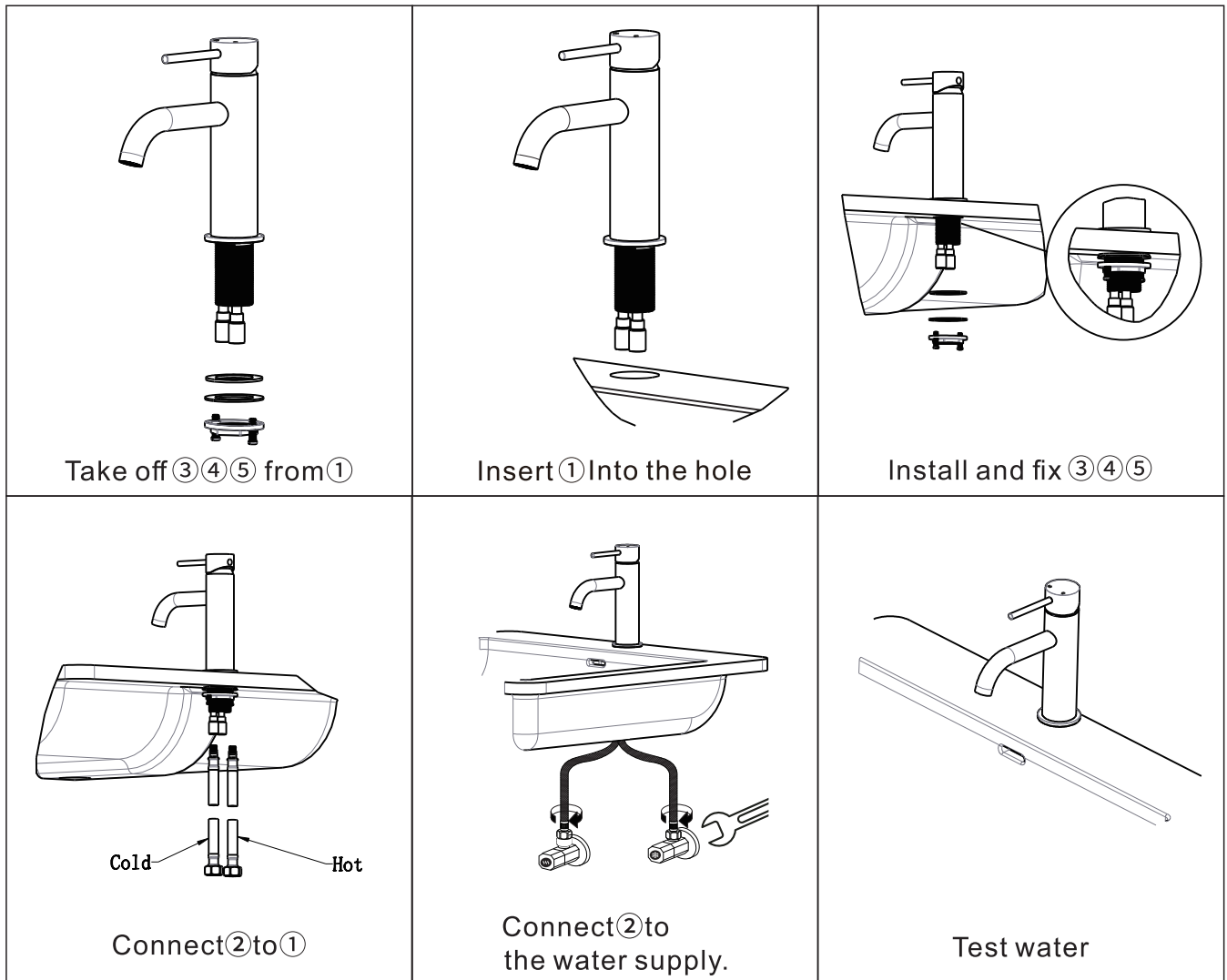


recommended working pressure
0.05–0.8 MPa



maximum hot water temperature
55 degrees

Installation Instruction



The warranty will be void for any of the following reasons

- The product has been damaged through misuse, neglect or accident.
- The product has not been used in accordance with any applicable instruction guide.
- The purchaser has attempted to modify or repair the product.
- The product is not installed by a Registered Plumber.

▪ Contact Information:

Email: support@acumios.com.au

Website: www.acumios.com.au




ACUMIOS

ACUMIOS

Curved Basin Mixer Installation Instructions

